



## THE PINEVILLE

3 BEDROOMS, 3 BATHS,  
2 CAR GARAGE,  
2198 HEATED SQ. FT.  
57'W X 62'6"D

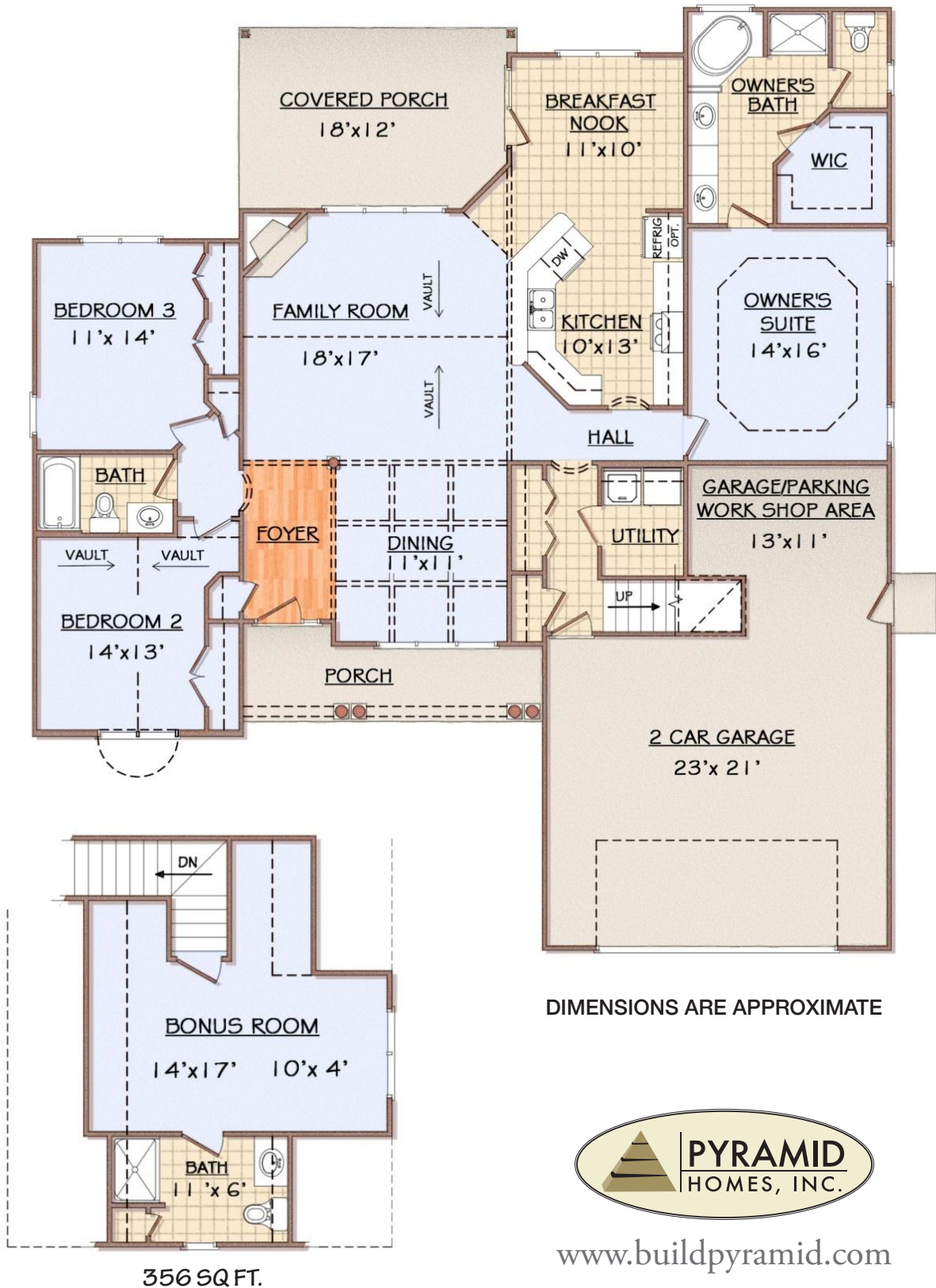


[www.buildpyramid.com](http://www.buildpyramid.com)

## FEATURES:

- Covered Front & Rear Porches
- Private Owner's Suite with Trey Ceiling and Walk In Closet
- Spacious Kitchen with Granite Countertops, Pantry and Breakfast Bar
- Dining Room with Coffered Design Ceiling
- Utility/Laundry Room
- Owner Bath with Soaking Garden Tub & Separate Shower
- Open Floorplan with Large Family Room
- Finished Bonus Room with Bath and Storage Closet
- Work Area In Garage

# THE PINEVILLE



DIMENSIONS ARE APPROXIMATE



[www.buildpyramid.com](http://www.buildpyramid.com)